

*live the*  
**GREEN**  
*grace*



SARAYU  
GREENS

WHERE EVERY CORNER BLOOMS WITH LIFE

*wake up to fresh*  
**BEGINNINGS**





# GRACEFULLY.

Sarayu Greens is a well-planned project with a luxurious blend of convenience and a vibrant community. The premises are beautifully planned with first-floor parking, an elevated green space, and top-of-the-line amenities, creating a calm living environment. Every element, from the private community temple and hall to the luxurious apartments, radiates sophistication and reflects the residents' prestigious living. Sarayu Greens is located in proximity to Pithampur Industrial Area's prominent locales, esteemed educational institutions, & entertainment zones.



# *everyday* CONVENIENCE

Saryu Greens is a place where timeless elegance blends seamlessly with the rhythm of today's life. This residential and commercial address brings together spacious 2 & 3 BHK homes and premium business spaces designed for growth and comfort.

Here, every detail is crafted to reflect sophistication, wide open spaces, serene surroundings, and an atmosphere that inspires peace and productivity alike. Whether you're coming home to calm evenings or stepping into a bright new business opportunity, Saryu Greens offers a lifestyle shaped by balance and beauty.







*a harmony of life and*  
**LIVELIHOOD**

SARYU GREENS - A PLACE WHERE THE SPIRIT OF GRACE  
AND GRANDEUR MEETS THE PROMISE OF MODERN LIVING

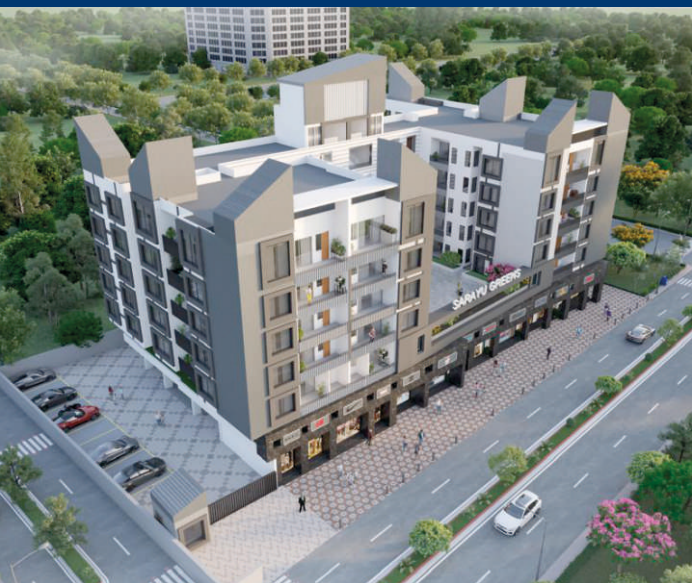


ABOUT MAN GROUP

Man Builders has delivered excellence with continued growth for the last 40 years, with multiple projects such as Ocean Park, Royal Bungalows, Royal Premium, Royal Platinum, Royal View, Royal Glory, Royal Park, Royal Garden and Villas Exotica. The sincerity of our commitments and the quality of our craft bring joy to your life and are a matter of pride for us.



# *salient* FEATURES



4-Sided open project  
with public gardens



Beautiful podium garden  
with children's play area



Cooler Homes with  
great ventilation



**Community Hall/  
Table Tennis/ Carrom room**



**Secured community with  
CCTV surveillance**





**Double heighted  
entrance lobby**



**Uninterrupted generator  
backup for lift & common area**



**Rain water  
harvesting**



**Integrated  
firefighting system**

# SPECIFICATIONS



Flooring- Vitrified flooring



Windows- Aluminum windows with mosquito net



Door- Laminated Flush Doors



Hardware- Handle Locks



CP and Sanitary- Plumber or equivalent



# SPECIFICATIONS



Finishing- Putty and paint



Switches-  
Modular Switches



Security Grills on windows



Granite kitchen platform  
with steel sink



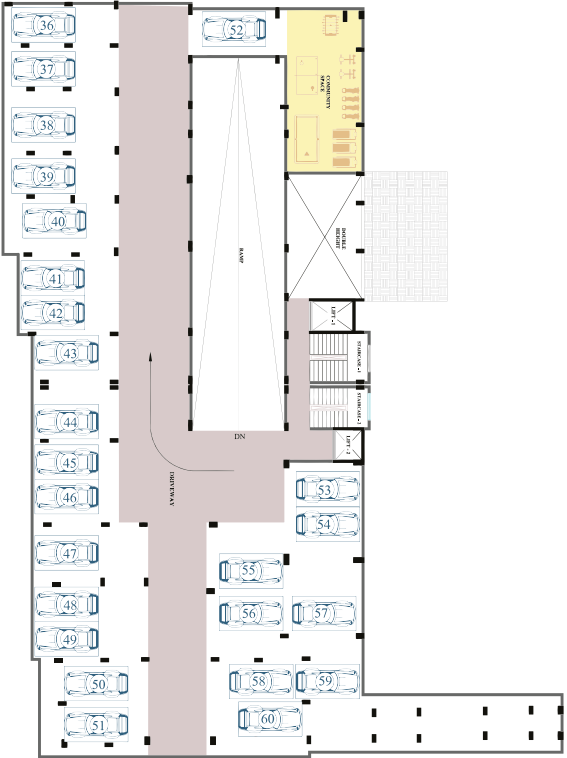
Bathroom - Glazed wall  
tiles up to 7ft



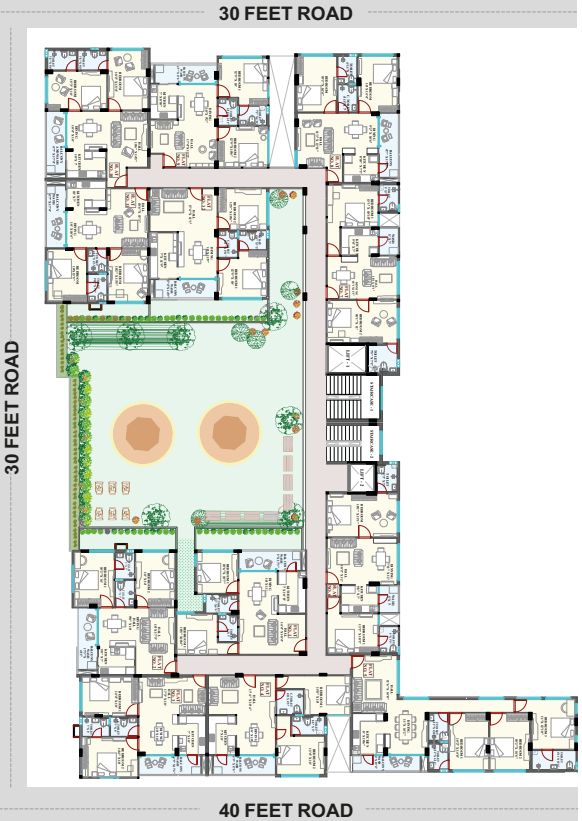




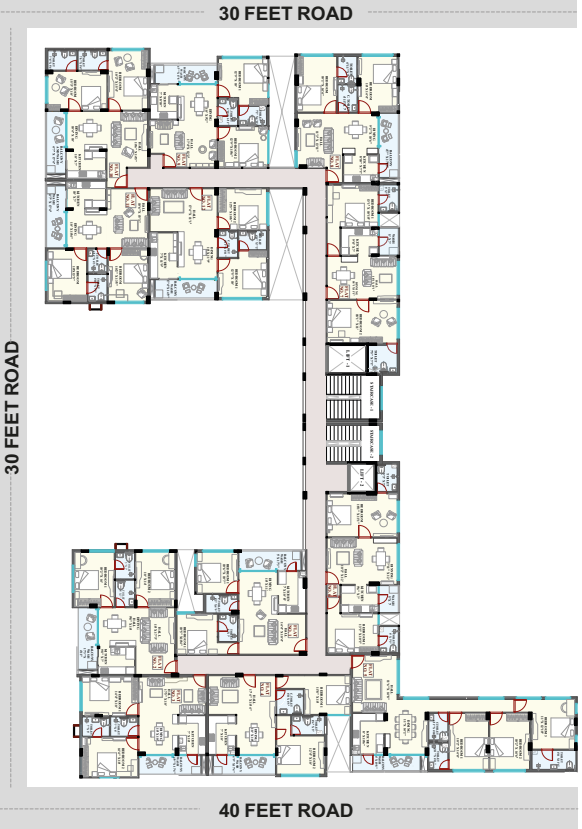
# GROUND FLOOR PLAN



**FIRST FLOOR PLAN**



# 1ST FLOOR PLAN



# 2ND TO 5TH FLOOR PLAN

## UNIT SIZES

Unit No.	Flat Type	Flat Size BA	Flat Size SBA	Facing
1	2 BHK	827	1158	East
2	2 BHK	860	1205	East
3	2 BHK	860	1205	North
4	2 BHK	879	1232	North
5	2 BHK	1256	1785	West
6	2 BHK	827	1159	West
7	2 BHK	817	1144	West
8	2 BHK	876	1228	West
9	2 BHK	856	1199	West
10	2 BHK	908	1272	East
11	2 BHK	833	1167	North
12	2 BHK	901	1262	North



Pulak City  
Garden



Chogala  
Restaurant

Housing Board  
Bungalow

Silicon  
City

Silicon City Main Gate

← Silicon City Road

Towards Rau

A.B. Road

A.B. Road

Emerald  
Heights  
School

Royal  
Krishna  
Bungalow

Towards Indore

LOCATION  
MAP



# *location* **ADVANTAGE**



## Landmarks

5 Mins	IPS College
10 Mins	Zodiac Mall
10 Mins	St. Joseph School
10 Mins	AU Cinema
10 Mins	Royal Park Mall
10 Mins	Emerald Heights School
10 Mins	Sage University
10 Mins	Dmart
15 Mins	Choithram Hospital
15 Mins	Medicaps University
15 Mins	IIM Indore
20 Mins	Rajwada



## Connectivity

2 Min	Silicon City
5 Mins	AB Road
5 Mins	AB Bypass Road
20 Mins	IT Park
25 Mins	Railway Station
30 Mins	Airport
30 Mins	Pithampur

## PAYMENT SCHEDULE

SCHEDULE OF PAYMENT	SHOPS'	FLATS
At the time of booking	20%	20%
Plinth Slab	10%	10%
Parking Floor Slab	10%	10%
1 <sup>st</sup> Floor Slab	10%	10%
2nd Floor Slab	10%	10%
3rd Floor Slab	10%	10%
4th Floor Slab	10%	10%
5th Floor Slab	10%	10%
Possession	10%	10%



RERA REGISTRATION NO.: P-IND-25-5754

Project by



Marketed by



**☎ 88897-68881**

**Site Address:** Pulak City, Silicon City, AB Road, Indore

**Head Office:** Bada Bangarda, Near Mahima Smart City,  
MR-5, Super Corridor, Indore

Disclaimer: This brochure is meant only for promotional purpose and has no legal value. The plans, specifications, images and other details herein are only indicative and subject to the approval of the concerned authorities. The Developer/Owner reserves the right to change any or all of these or extend the number of floors in the interest of the development, without prior notice or obligation. Artists impressions are used to illustrate the amenities, specification, image and other details and these may be applicable to select apartments only. Tolerance of +/- 2% is possible in the unit areas on account of design and construction variance. All brands stated are subject to final decision of the project architect. This printed material does not constitute an offer and/or contract of any type between the developer/owner and the recipient. Any purchase/lease of this development shall be governed by the terms and conditions of the Agreement for Sale/Lessee entered into between the parties, and no detail mentioned in this printed material shall in any way govern such transaction.